

LIFTED LASHES
& VOLUME

LASH QUEEN FATAL BLACKS WP M A S C A R A

- LIFTED LASHES & VOLUME
- INSPIRED BY THE PROFESSIONAL LASH LIFTING TECHNIQUES
- DOUBLE THE EYE-OPENING EFFECT
- VOLUMIZED & ULTRA-SUPPLE LASHES
- SETS THE WIDE-OPEN LOOK
- LIFTED FROM THE ROOT

LASH QUEEN
FATAL BLACKS WP
M A S C A R A
MAKE-UP RESULT



A UNIQUE
BRUSH/FORMULA DUO

PYTHON BRUSH

- 1 INTERNAL CURVE:**
Lifted from the roots
Instant volume
- 2 LATERAL BRISTLES:**
Optimizes volume
- 3 TIP:**
Catches & sets short
lashes

**ULTRA-GRIP
WP FORMULA**

- Instant volume & lift
- Embraces every lash
- Gliding & smooth application
- WP 12hrs
- Fortify and protect

PYTHON BRUSH

- ① Internal curve
= Lift + Volume



- ② Lateral bristles = Volume



- ③ Tip = Catches short
lashes

ULTRA-GRIP WP FORMULA



- ① Wax™ complex
= Instant volume & lift

- ② Triple polymers system
= Embraces every lash
= Smooth application
= WP 12hrs
Ceramides +
Pro-Vitamin B5
= Fortify & protect

APPLICATION

Apply LASH QUEEN
FATAL BLACKS WP
from the roots to the
tips

- 1 Use the internal curve to lift lashes from the roots, and to give instant volume
- 2 Turn the brush and use largest lateral bristles to optimize volume
- 3 With the thin brush end, catch and fan the short lashes in the outer and inner corner to open the eyes

APPLICATION

- 1 Lift from the roots the full fringe in the middle with the internal curve



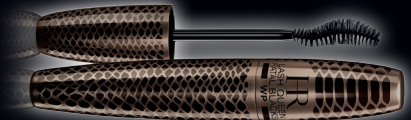
- 2 Optimize volume with the largest bristles



- 3 To open the eyes: catch and fan short lashes in the corners with the tip



UNPRECEDENTED JEWEL-DESIGN



Design python
leather-like textured
packaging

Precious casing with
metallic scales

A unique technology
used for the first time
ever in cosmetics



LASH QUEEN FATAL BLACKS WP M A S C A R A

MAKE-UP RESULT

- Lifted lashes & volume
- Eye-opening effect

TECHNOLOGY

(A brush/formula duo)

- Python Brush
= Lift + volume + catches short lashes
- Ultra-grip formula
= Instant volume & lift
Gliding & smooth application
WP 12hrs
Fortify and protect

JEWEL DESIGN

- Design python leather-like textured packaging